

NIIGATA 45M

Marketing Activity Summary -
May 2025

37 SOUTH

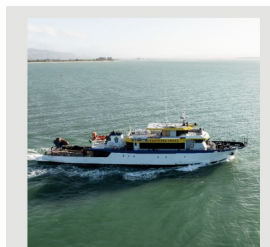
Website

Activity:

Sale listing - <https://www.37southyachts.com/for-sale/niigata-45m>

Blog post -

<https://www.37southyachts.com/post/expedition-yachts-for-sale>



Niigata 45m

Price

USD 2,700,000

Length

45m

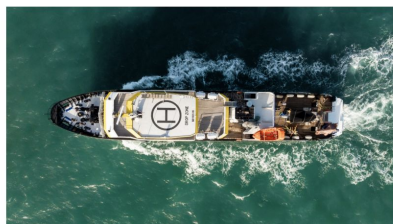
Built

1995 (Refit in 2023/2024)

Guests

13

1. Niigata 45m – Purpose-Built for Extended Exploration



- **Length:** 45m
- **Year Built:** 1995 (Refit in 2023/24)
- **Range:** 7,500 nautical miles
- **Accommodation:** Up to 13 guests in 5 cabins

Key Features:

Built by Japan's Niigata Shipyard and transformed through a major refit in 2023/24, this expedition yacht was designed for serious cruising. She features a steel hull, aluminium superstructure, and military-grade systems throughout.

The expansive sun deck includes a helideck, bar, and lounge space, making it ideal for entertaining or remote operations. A long aft deck provides crane access and ample storage for tenders and exploration gear, with a swim platform offering direct water access. With a practical, high-volume layout and upgraded stability (including 18 tonnes of added keel weight), she's a go-anywhere vessel made for off-grid adventures.

37 SOUTH

[Charter](#) [Destinations](#) [Gulf Craft](#) [Brokerage](#) [Services](#) [Contact](#) [Q](#)

Niigata 45m

The Niigata 45m is an expedition yacht that combines practical design with serious exploration capabilities. Originally launched by Japan's Niigata Shipyard, she was extensively refitted in 2023/24 to transform into a specialised expedition vessel, ideal for remote cruising. The exterior was designed by Periscope Naval Architects, with interiors by Ashley Sutton Design and naval architecture by the original builders, Niigata Shipyard. With a robust, seaworthy build and accommodation for up to 13 guests across five cabins, she's perfectly suited to adventurous owners seeking comfort without compromise.

[Enquire now](#) →

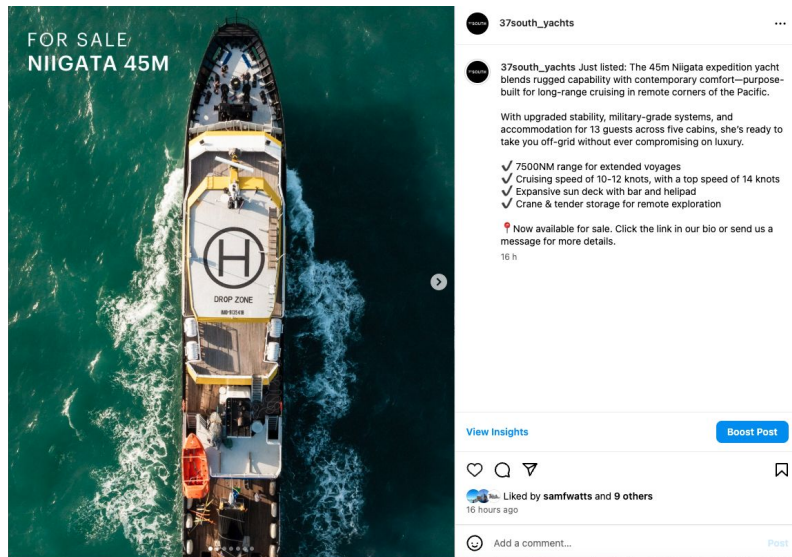
Length
45m

Guests
13

Built
1995 (Refit in 2023/2024)

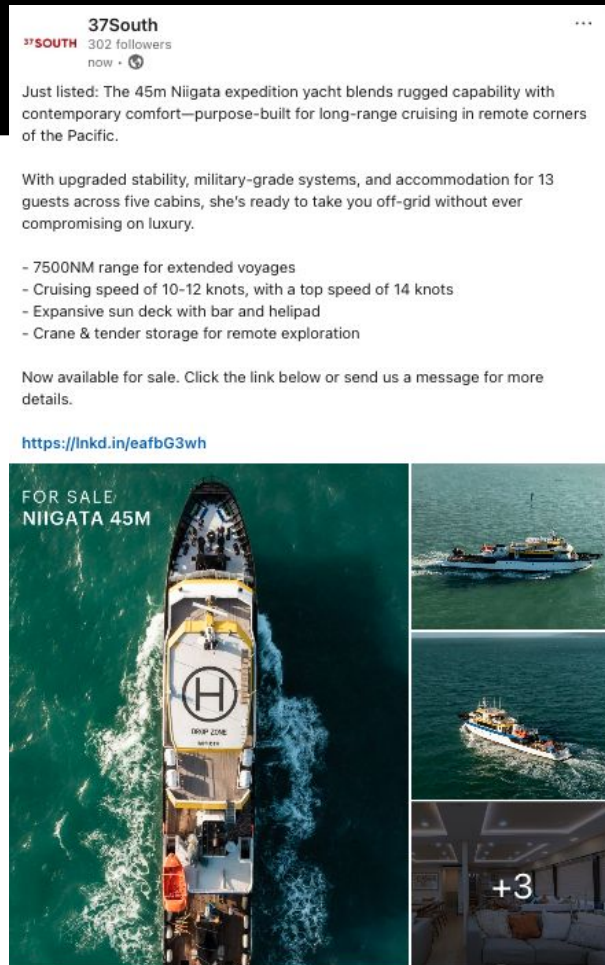
Price
USD 2,700,000

Social Media



Activity:

- Carousel post on [Instagram](#), [Facebook](#) and [LinkedIn](#)
- Instagram stories



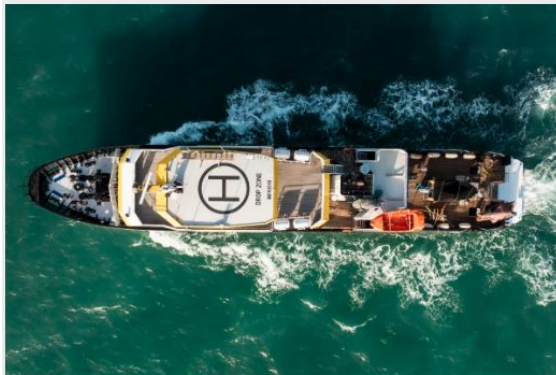
Email

Activity:

- Email sent to our database to promote the sale of Southern Cross

[View full email](#)

37 SOUTH

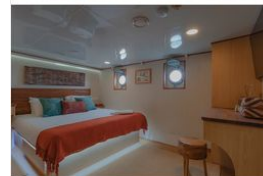


FOR SALE: NIIGATA 45M

Southern Cross is a 45m expedition yacht that combines practical design with serious exploration capabilities. Formerly known as Immortals and built by Japan's Niigata Shipyard, she underwent a major refit in 2023/24, creating a rare opportunity for those seeking long-range performance, upgraded stability, and refined living, all in one.

With a range of 7,500NM and a layout optimised for extended cruising, she's purpose-built for reaching remote destinations across the South Pacific and beyond, without compromising on comfort.

[BROCHURE](#)



INTERIOR HIGHLIGHTS:

- Five staterooms accommodating up to 13 guests
- Spacious main salon with large windows and formal dining area
- Semi-enclosed sun deck lounge and bar with panoramic views

[VIEW DETAILS](#)

Listings

boats
.com

Boats for Sale Sell my Boat

Reviews How-to On the Water

Custom Niigata 45m

£2,032,603 Listed price: US\$2,700,000 📍 Auckland, New Zealand



Presented For Sale By:

37 South
155 Beaumont St, Wynyard Quarter
Auckland
New Zealand
0064223097824

[View Seller Inventory](#)

Call Now

Send Email

Boat Details

Make	Custom
Model	Niigata 45m
Year	1995
Condition	Used
Price	US\$2,700,000
Type	Power
Class	Motor Yacht



1 of 8 Images

Links:

- [Boats.com](https://boats.com)
- [Yachtworld.com](https://yachtworld.com)
- [Yatco.com](https://yatco.com)

Sales Brochure



For Sale
Niigata 45m

37 SOUTH

Activity:

- 37South branded brochure
- Broker friendly brochure



Length Overall: 45m

Beam: 7m

Draft: 3.75m

Gross Tonnage: 319

Builder: Niigata Engineering Co Japan

Year: 1995 (Refit in 2023/2024)

Top Speed: 14 knots

Cruise Speed: 10-12 knots

Construction: Steel hull with an
aluminium superstructure